

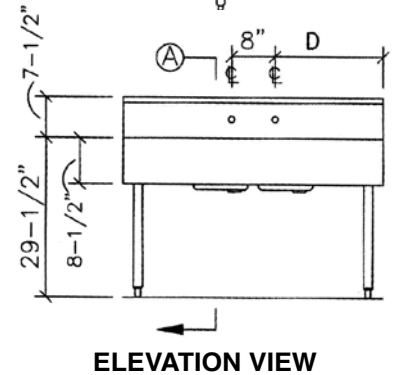
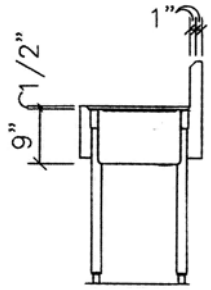
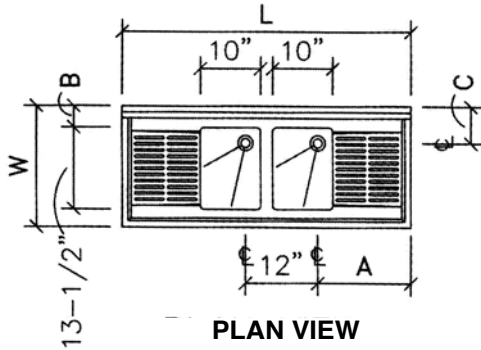
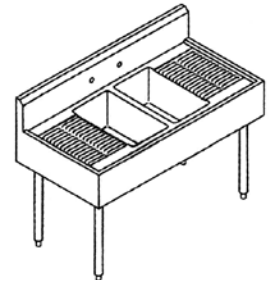
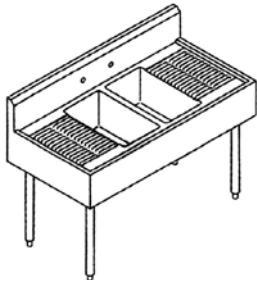


# LAMBERTSON INDUSTRIES

HIGH-QUALITY STAINLESS STEEL

## BARSINKS SCHEMATICS

### TWO TUB STAR BRIGHT UNDERBAR SINKS



| MODEL        | L   | W   | A       | B      | C  | D   | WEIGHT  |
|--------------|-----|-----|---------|--------|----|-----|---------|
| 2SL-4-2D12   | 48" | 20" | 15-1/2" | 3-1/2" | 6" | 20" | 45 LBS. |
| 2SL-4-2D12-4 | 48" | 24" | 15-1/2" | 5-1/2" | 8" | 20" | 50 LBS. |
| 2SL-5-2D18   | 60" | 20" | 21-1/2" | 3-1/2" | 6" | 26" | 55 LBS. |
| 2SL-5-2D18-4 | 60" | 24" | 21-1/2" | 5-1/2" | 8" | 26" | 60 LBS. |
| 2SL-6-2D24   | 72" | 20" | 27-1/2" | 3-1/2" | 6" | 32" | 65 LBS. |
| 2SL-6-2D24-4 | 72" | 24" | 27-1/2" | 5-1/2" | 8" | 32" | 70 LBS. |
| 2SL-7-2D30   | 84" | 20" | 33-1/2" | 3-1/2" | 6" | 38" | 75 LBS. |
| 2SL-7-2D30-4 | 84" | 24" | 33-1/2" | 5-1/2" | 8" | 38" | 80 LBS. |

**CORRUGATED DRY ZONE™**



#### NOTES

- ▶ TOP — 16 GAUGE TYPE 304 STAINLESS STEEL WITH INTEGRALLY FORMED BACKSPASH AND MARINE EDGE AT THREE SIDES.
- ▶ CORRUGATED DRY ZONE SURFACE (FLAT SURFACE TO BE SPECIFIED BY CUSTOMER)
- ▶ SINK — 16 GAUGE TYPE 304 STAINLESS STEEL ALL WELDED CONSTRUCTION. ALL VERTICAL AND HORIZONTAL CORNERS WITH 5/8" RADIUS COVE. BOTTOM OF TUBS ARE PITCHED TOWARD DIE STAMPED CENTER DRAIN OPENING. TUBS ARE INTEGRALLY WELDED TO TOP.
- ▶ LEGS — 1-5/8" 16 GAUGE GALVANIZED TUBING WITH STAINLESS STEEL LEG GUSSETS AND ADJUSTABLE SANITARY BULLET TYPE FEET.
- ▶ CUSTOM SIZES AND CONFIGURATIONS AVAILABLE.

LAMBERTSON INDUSTRIES • 1335 ALEXANDRIA COURT • SPARKS, NV 89434

PHONE: 775-857-1100 • FAX: 775-857-3289 • TOLL-FREE: 800-548-3324

